



AUDI A4 (B8) 2.0 TSI FMIC

INSTALLATION INSTRUCTIONS.



Please thoroughly read through and familiarize yourself with these instructions in their entirety prior to beginning any part of the installation process of any component. Please also ensure that the vehicle and engine have cooled down sufficiently to avoid risking possible skin burns or other injury.

Tools required:

T25, T30 Torx Driver,

Flat blade screwdriver,

Drill - 4, 6.5 and 16mm drill bits

5mm Allen key

7mm Hose clamp driver,

10mm, 13mm socket

Engineered for performance

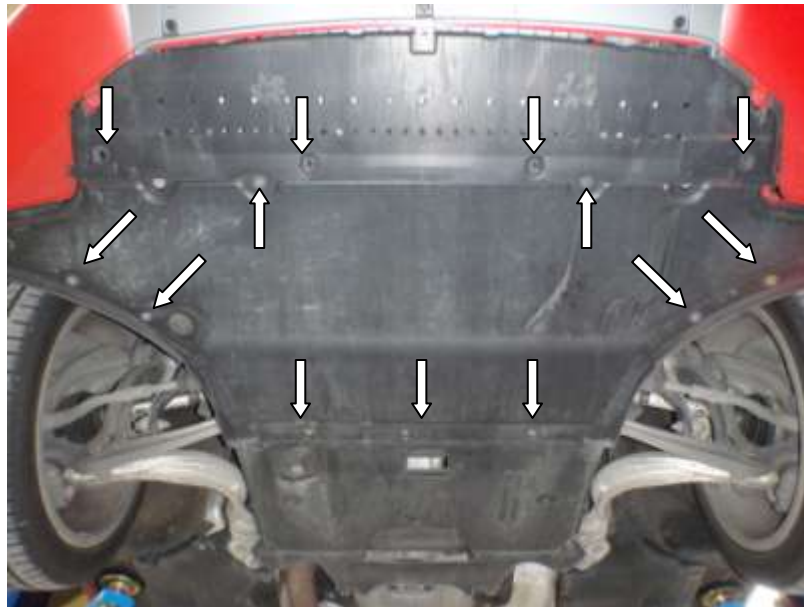
Dremel or hacksaw blade,

Marker pen

Square (90deg).

Vehicle jack and axle stands.

1. Open and secure the bonnet. Secure the vehicle on the hand brake and chock the wheels. Lift the front of the vehicle on a suitable vehicle lift or with a jack and support with axle stands.
2. Begin by removing the 4x T30 Torx screws from the under tray. Use a flat blade screwdriver to undo the screws around the outside of the main under tray.



Engineered for performance

3. Remove the 2X T25 Torx screws located inside each wheel arch.

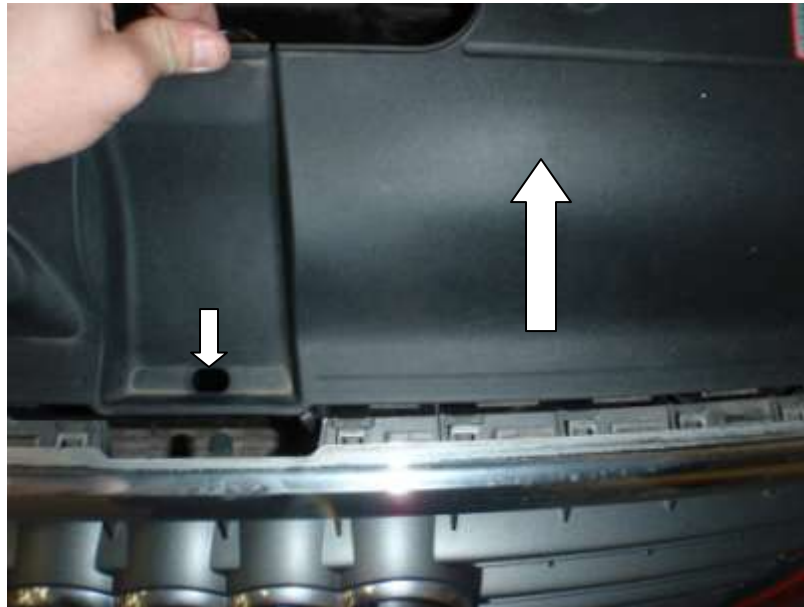


4. Moving to the top of the bumper remove the 4x T25 Torx.



Engineered for performance

5. Along the front edge of the grill press in plastic tangs. Slide the plastic cover towards the rear of the car to release it from the front bumper.



6. Disconnect the two sensors located inside the front bumper.



Engineered for performance

7. Disconnect the connector from the back of both headlights.



8. To remove the headlights, undo the 2x T30 Torx of the above the headlight. The remaining 2x T30 Torx are located at the rear of the headlight and are slightly more difficult to access.



9. Once these have been removed the headlight can be pulled forward and twisted to clear the body to free it from the vehicle. Place the headlights in a safe place to prevent damage while working on the car.

Engineered for performance

10. Undo T25 Torx screws inside front grill one per side.



11. Using a 10mm socket undo the bolt inside both wings. These are the final fixings holding the bumper to the vehicle.

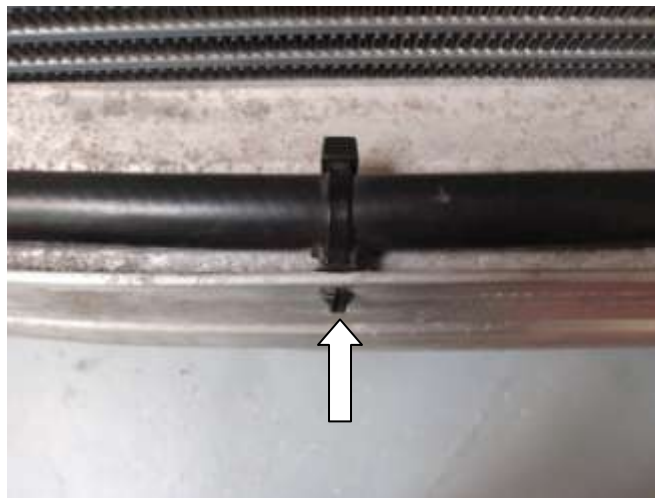


12. To fully remove the bumper from the vehicle it may require a second person. Release each side of the bumper from its plastic clips at each side of the vehicle, with a firm pull outwards. The bumper will now pull away from the vehicle. While one person supports the bumper, a second disconnects the wiring from both fog lights.

13. Place the bumper in a safe place, to prevent damage while carrying out the rest of the installation.

Engineered for performance

14. Using a flat blade screwdriver release the wiring clip on the top of the crash bar. Disconnect the horns located at each end of the crash bar.



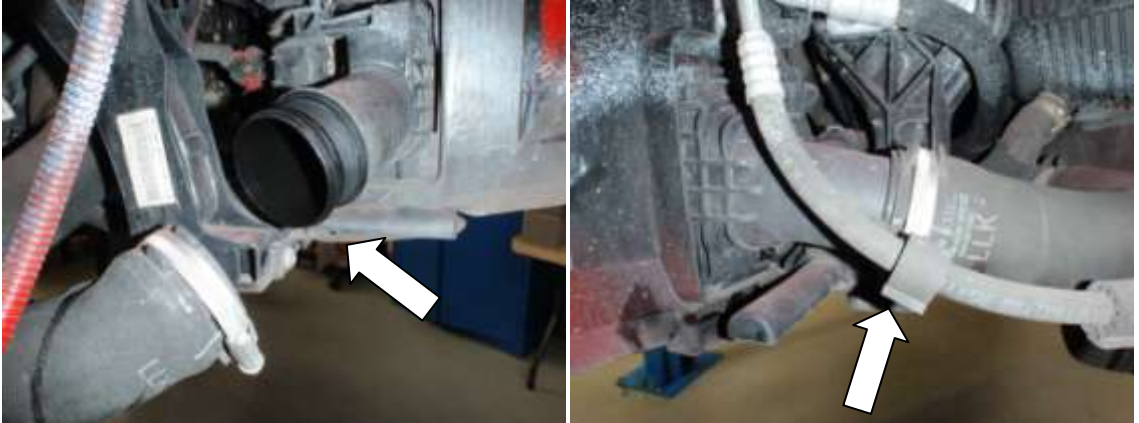
15. Using a 13mm socket or spanner undo the 4x bolts at both ends of the crash bar and remove it from the vehicle.



Engineered for performance

16. Using a Flat blade screwdriver unclip both air guides.

17. Disconnect the hoses from the inlet and outlet of the intercooler.



18. Undo the T30 Torx screw.



19. Un-clip the intercooler and twist top forward to release the intercooler.



Engineered for performance

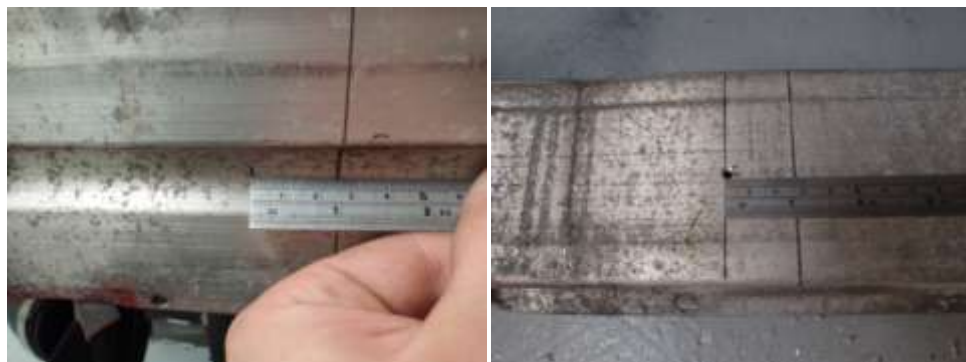
20. Place the Forge intercooler in position. The intercooler locates on the original lower intercooler mounts. Ensure the intercooler is push up against the stop on the right-hand clip. Put the crash bar back on the car and hold in position with 2x crash bar bolts.
21. To mark the correct position for the top intercooler fixings use a Square or Right angle. Position the square against the side of the core.



22. Remove the crash bar from the car. Continue the marked position down the front and rear face of the crash bar.



23. Mark 25mm outward of the line. On both sides of the crash bar.



Engineered for performance

24. Measure the crash bar and mark in the centre. Pilot drill the 4x marked positions and refit to the car to check alignment.
25. Once happy with the alignment open up the holes of the inside of the crash bar to 8.5mm and the outside to 16mm.
26. To trim the air guides, mark 20mm down from the top and mark around the pattern provided.



27. Using a Die grinder, Dremel, or similar tool to cut the plastic to give clearance for the intercooler.
28. Place the Forge Intercooler in position, refit both air guides. Refit the crash bar. Using the M8 x12mm Dome Head bolts provided bolt the intercooler to the crash bar.



Engineered for performance

29. Trace the standard boost pipe back to the turbo outlet. Using a 7mm hose clamp driver release the jubilee clip.
30. Undo the 3x M6 Allen head bolts on the turbo outlet. Remove the standard outlet and sealing O-ring.

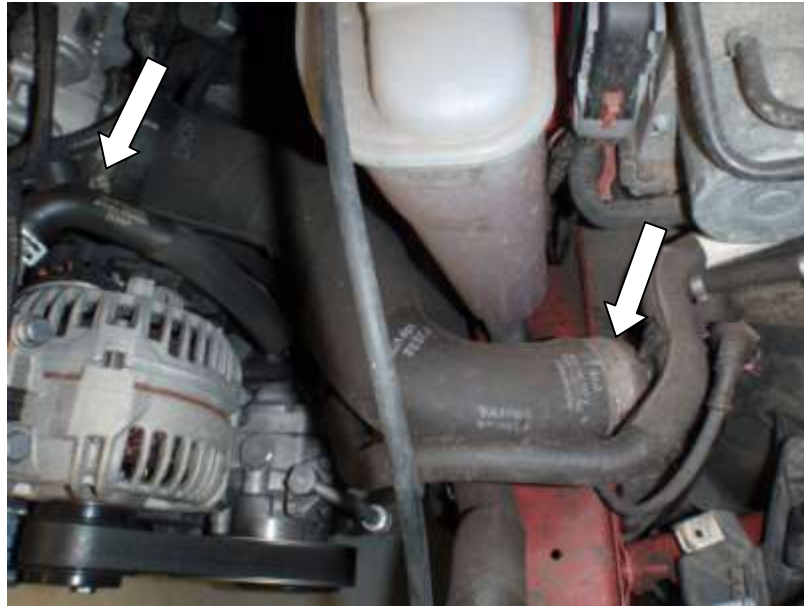


31. Carefully insert your Forge 60mm tapered turbo outlet adapter with new O-ring. Secure with original Allen head bolts. Reuse original O-ring on the outside face.



Engineered for performance

32. Use the Forge silicon hose provided join the turbo outlet to the intercooler. Secure in place using 2x 70mm Jubilee.
33. Use a 7mm hose clamp driver undo the jubilee clips on the hose running from the throttle body to the hard pipe near the left-hand wing.



34. Undo the standard hose running to the hard pipe and resonator under the left hand wing.



Engineered for performance

35. Unclip MAP sensor. Unscrew 2x T25 Torx on the sensor and remove it from the hard pipe.

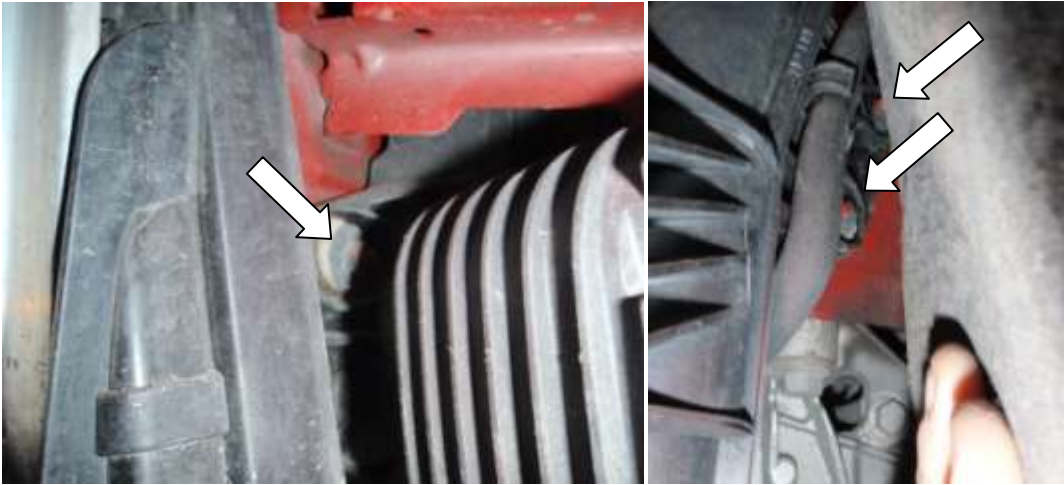


36. On the inside of the arch liner remove 2x clips using a flat blade screwdriver.



Engineered for performance

37. Push the arch liner to one side. Unclip hose and undo the 3x 10mm fixing holding the hard pipe and resonator to the chassis rail.

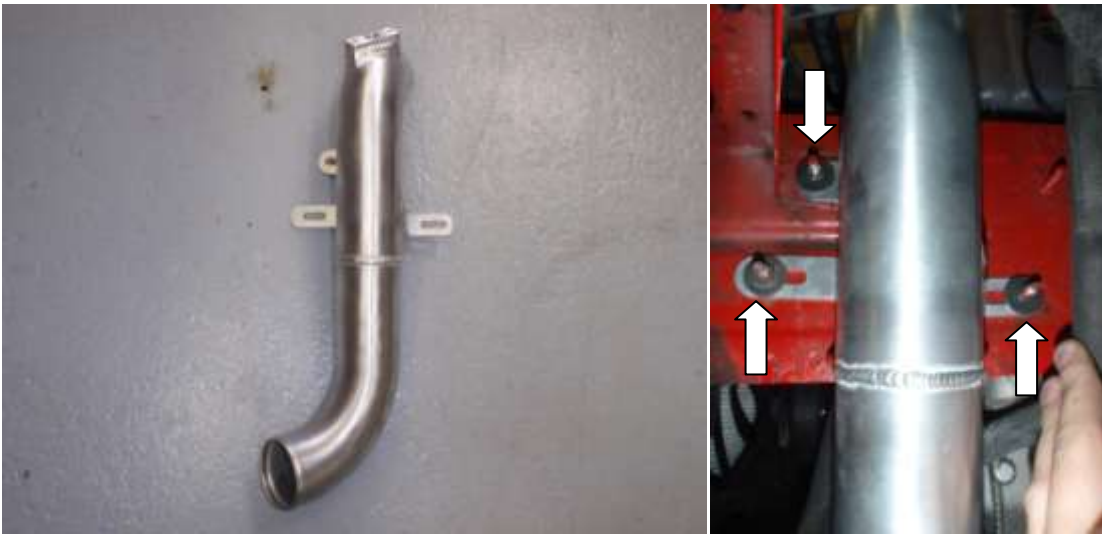


38. Undo 10mm nut located behind chassis rail.

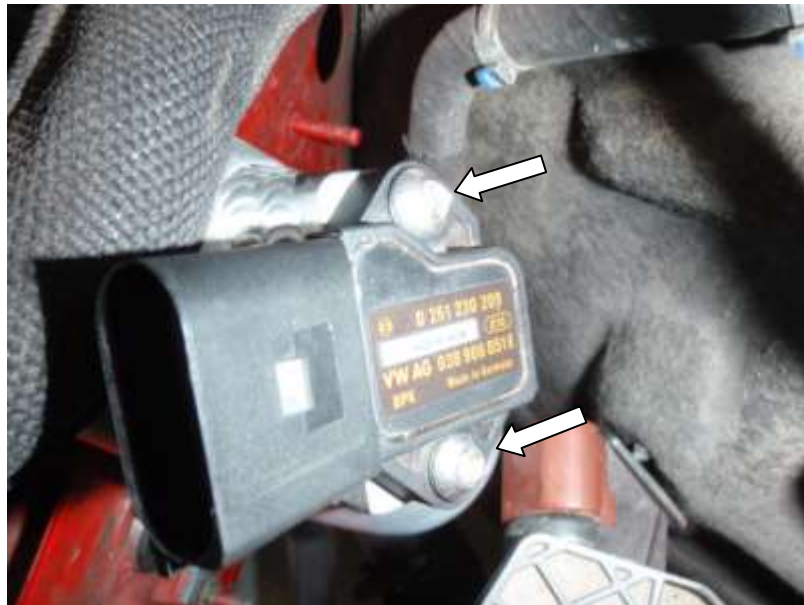


Engineered for performance

39. Place Forge Alloy boost pipe in position. Secure the 3x bracket using the original 10mm nuts.



40. Use M6 Allen head bolts and washers bolt the map sensor to the alloy boss. Reconnect wiring to the MAP sensor.



Engineered for performance

41. Using the Forge silicone hoses provided join the throttle body to the top of the alloy S-bend and secure using a 70 and 80mm Jubilee clip.
42. Using the last silicone hose in the kit, connect the intercooler outlet to the bottom of the S-bend. Secure with 2x 70mm Jubilee clips. Check that all the jubilee clips are tight, check all intercooler and boost pipe fixings.



43. Follow steps 15 to 2 in reverse to reassemble your car.
44. Your installation is now complete. Enjoy Your New Performance!

For a full range of performance products for your vehicle.

As always, with any questions or concerns about this product or anything else, please feel free to contact your local or preferred Forge Motorsport Dealer/ Installer, or you may contact us directly.



Engineered for performance

